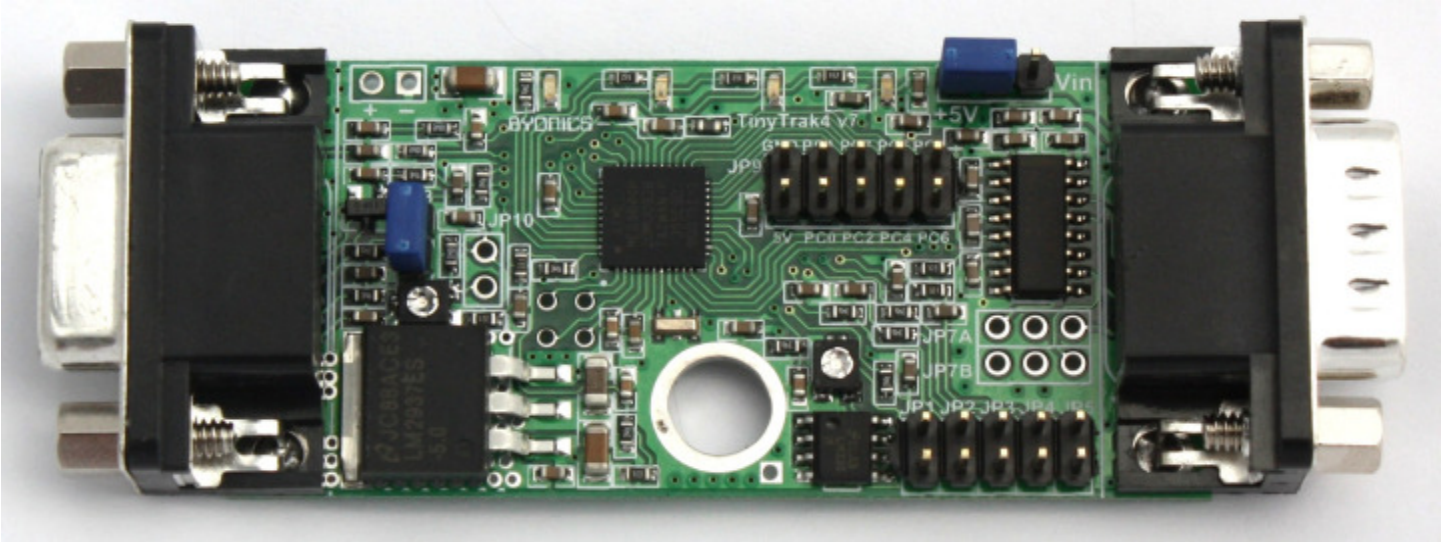


BYONICS

TinyTrak4 v7

Hardware Manual v7.1



Overview

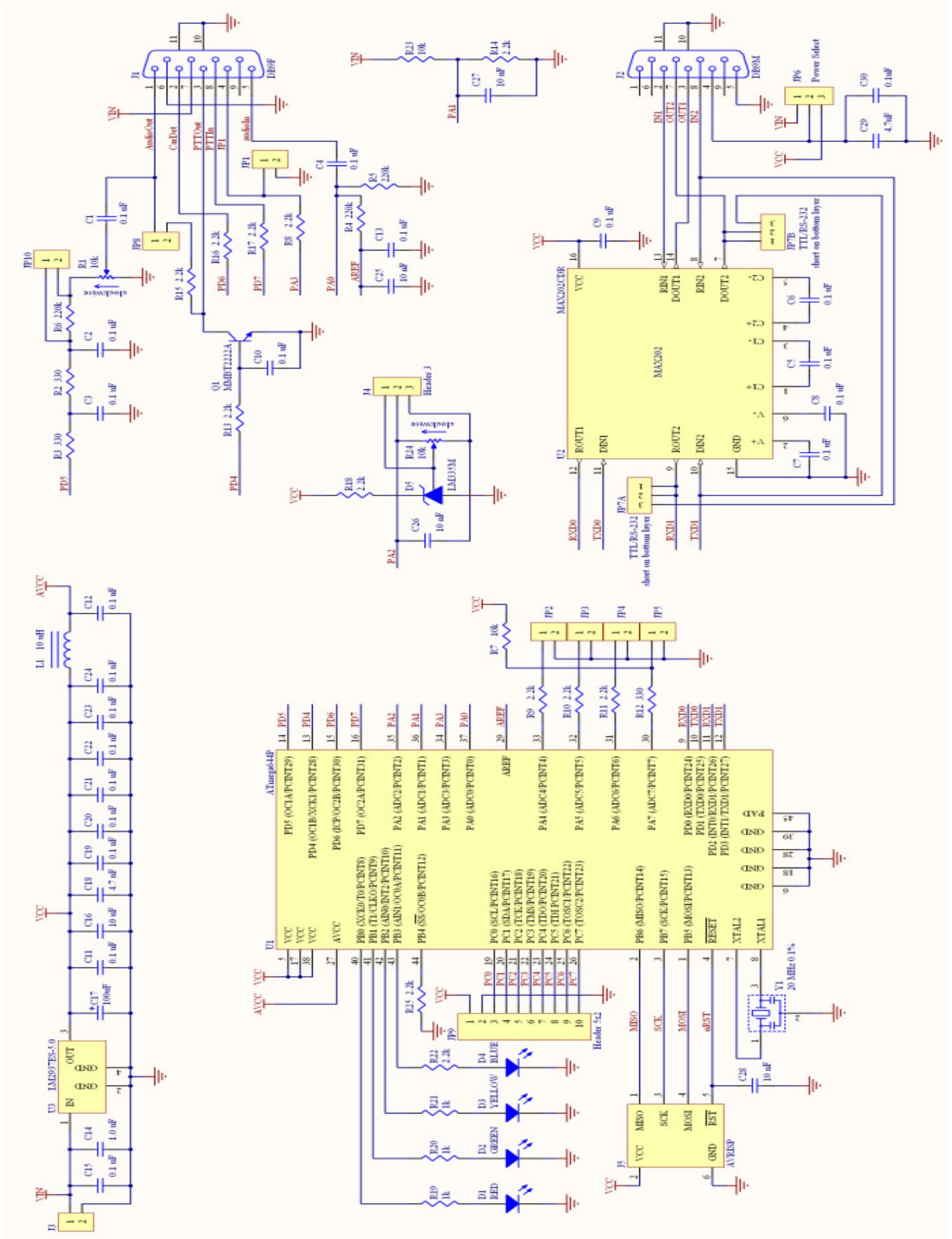
The TinyTrak4 (TT4) is a radio interface capable of transmitting and receiving position and other digital information over a two-way FM radio. It is typically used with a GPS receiver to transmit position reports into the amateur radio APRS™ network. It can also be connected to a computer to display stations and messages received from the APRS™ network. The TinyTrak4 interfaces to a radio via the microphone and earphone inputs, and to computers and GPS receivers via serial ports. The features of the TinyTrak4 can be updated by downloading new firmware from the TinyTrak4 website, and loaded into the device with a computer.

Other TinyTrak4 Documentation

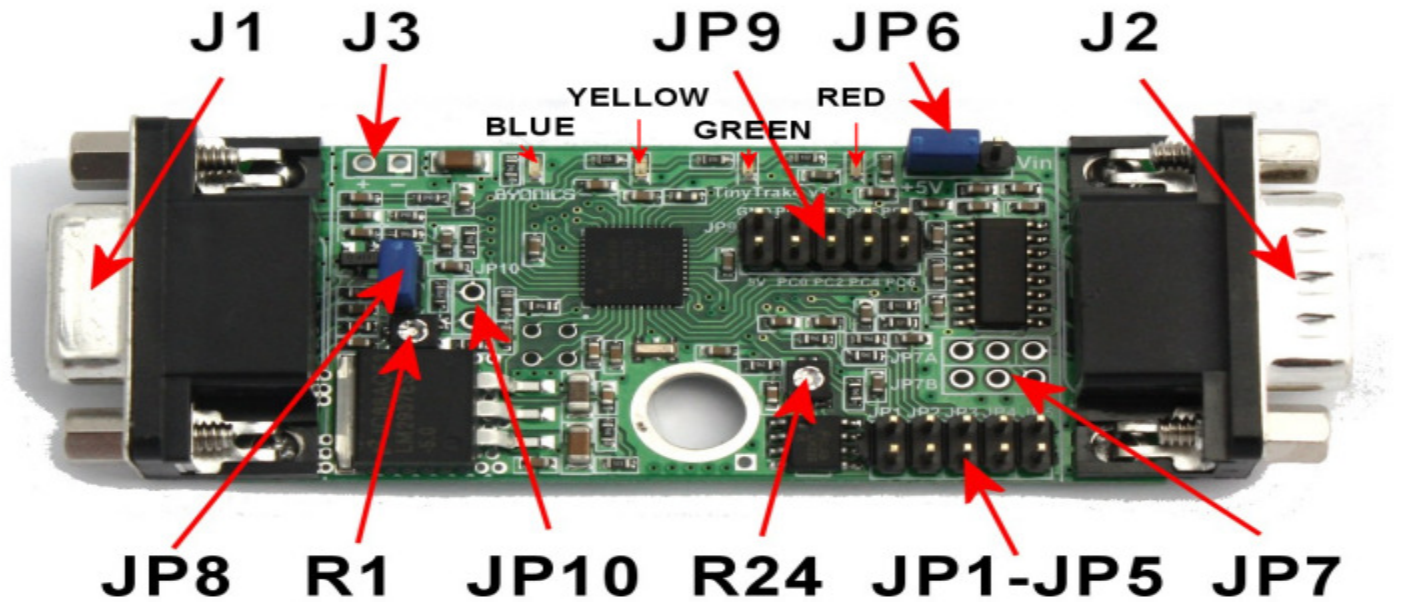
The TinyTrak4 is available in several different forms. This manual is for the TinyTrak4 Built and Tested Surface Mount (SMT) version 7, pictured above. Documentation for other TinyTrak4 versions and accessories can be found at the Byonics website www.byonics.com, including:

- **TinyTrak4 Kit Hardware Manual** – for the through hole kit version
- **TinyTrak4 Built Hardware Manual version 5** – for the previous Built surface mount version
- **TinyTrak4 Firmware Loading Manual** – instructions for loading firmware into the TinyTrak4
- **TinyTrak4 Quick Start Guide** – a guide for first time users to start operating
- **TinyTrak4 Alpha Firmware Manual** – documentation for the Alpha firmware for TinyTrak4
- **TinyTrak4 DK Adapter Manual** – instructions for interfacing a display and keyboard

Schematic



Interfacing



LEDs

There are 4 LEDs along the top of the TinyTrak4. They can have different meanings depending on the firmware that is loaded. For the Alpha firmware, they represent:

- Blue – Power
- Yellow – Carrier Detect
- Green – GPS Status
- Red – Push To Talk (PTT) active

J1 - Radio

Pin	Function	Description
1	Audio out	Generated packet or other audio tones to be transmitted via the radio microphone jack.
2	Carrier Detect	Digital carrier detect state from radio. Can either be active high or active low.
3	PTT Out	This line is grounded when the radio should transmit. Connect to radio PTT input.
4	JP1	Optional J1 interface to the JP1 line. Can be an analog or digital input, or output, depending on firmware.
5	Audio in	Audio received from the radio via the earphone or speaker jack.
6	Ground	Ground return for power, audio, PTT and all other signals.
7	Power In	Power input to the TinyTrak4. Can be 6V to 18V.
8	PTT In	State of optional external microphone PTT switch. Grounded during transmit.
9	No connection	May be end-user wired for custom features.

Female DB-9 connector J1 is used to interface TinyTrak4 to a radio transceiver. It is compatible with the radio connector on the TinyTrak3 and Kantronics TNCs, such as the KPC-3. Connect Audio Out (J1 pin 1) to the radio's microphone input. If the transmitter transmits when the microphone input is

grounded (most handheld (HT) radios do, except the Kenwood brand), jumper JP8 must be installed, but PTT Out (J1 pin 3) will not need to be connected to the transmitter. For all other transmitters, PTT Out (J1 pin 3) will be needed, and should be connected to the transmitter's PTT input. If JP8 is closed, you should not wire PTT Out to the radio. PTT Out is grounded when the transmitter is to be keyed. To prevent transmissions over other stations, connect the receiver's audio out (earphone or speaker) jack to the Audio In (J1 pin 5). Also connect Ground (J1 pin 6) to the radio's ground. Refer to the transceiver's manual for more information, and look for a section on installing a terminal-node controller (TNC) for packet operation, as TinyTrak4 is interfaced in a similar manner.

J1 is usually used to supply TinyTrak4's power, via pin 6 and pin 7. Current draw is approximately 50ma, and it can be feed with a voltage between 6 volts and 18 volts.

J1 also provides an optional PTT Input (J1 pin 8) to allow TinyTrak4 to transmit a data burst after the microphone is unkeyed after voice traffic. This input should be grounded when PTT is pressed, and floating when PTT is released. This input is not needed for normal operation. J1 also can optionally interface to a radio's carrier detect output via the Carrier Detect input (J1 pin 2). To use this option, Carrier Detect should be grounded when the channel is busy. Some example radio interface diagrams are available at <http://www.byonics.com/>.

JP1 is available on the J1 connector at J1 pin 4 to add an optional interface point for that signal. Various firmware can use this as an option switch, an analog input, or a digital output.

J2 - Serial

PIN	Function
1	No Connection
2	Primary Serial data in from a GPS or computer
3	Primary Serial data out to a GPS or computer
4	Power out for GPS (Vin or 5V), or alternate power input
5	Ground
6	No Connection
7	Secondary Serial data out to a GPS or computer
8	Secondary Serial data in from a GPS or computer
9	No Connection

The male DB-9 J2 serial connector is used to connect to a computer, or a serial GPS, or both. The primary serial port is on pins 2 and 3. J2 pin 3 is used to transfer serial data from the TinyTrak4 to a GPS or a computer. J2 pin 2 is used to transfer serial data from the GPS or computer to the TinyTrak4. J2 pin 5 is serial ground. Both a gender-changer (female-to-female) AND a null-modem adapter will be needed to interface a computer to TinyTrak4. A null-modem adapter swaps pins 2 and 3, and connects pin 5. Use a DB-9 serial extension cable if it is difficult to connect the gender-changer, null-modem adapter, and TinyTrak4 directly to the computer 9-pin serial port.

The secondary serial port is available on pins 7 and 8. A "Y-adatper cable" can be built to separate the primary and secondary serial ports to separate connectors. When a splitter cable is used, it is recommended to connect the computer to the primary port (pins 2 & 3) and the GPs to the secondary port (pins 7 & 8).

If using a GPS that normally plugs directly into a computer serial port, that GPS can be plugged directly into TinyTrak4's J2 serial connector. If the GPS does not connect directly into a computer's serial port, an interface will need to be built. The GPS should have a female DB-9 with GPS serial

data out wired to pin 2, and ground to pin 5. If GPS serial input will be used, it should be wired to pin 3. J2 can also be used to supply or receive TinyTrak4's power. If this is desired, JP6 can jumpered to Vin (the right 2 pins) to send in incoming voltage (usually 12V) to the GPS via J2 pin 4. Set a jumper shunt on the left 2 pins of JP6 to make 5V available on J2 pin 4. When selecting 5V, do not use a GPS that draws more than about 120ma. The TinyTrak4 may get warm when providing 5V to most GPSs. If JP6 is jumpered to Vin (the right two pins), power can be supplied to the TinyTrak4 via J2 pin 4.

The secondary serial port (J2 pins 7 and 8) can be set for either RS-232 levels, or TTL levels via jumper JP7A and JP7B.

J3 - Power (also J1 and J2)

TinyTrak4 must be powered with an external source of 6-18 volts DC, such as a 9-volt battery, or a 12-volt cigarette lighter plug. TinyTrak4 is NOT powered via a computer's serial port. Power can be applied via J1, J2, or J3. J1 is the most common way to power the TinyTrak4. To use J1, connect pin 7 to positive voltage and pin 6 to ground. To use J2, connect pin 4 to positive voltage and pin 5 to ground. JP6 must be set for Vin to apply power via J2 and 5V out will not be available on J2. To use J3, apply positive voltage to the plus (+) hole, nearest J1, and ground to the minus (-) hole. Only one of the three jacks J1, J2, and J3 should be used to supply power to the TinyTrak4. If power is applied via J2 or J3, the same power will be available on J1 to power a radio. If power is supplied via J1 or J3, power can be retrieved via J2 to power a GPS, if JP6 is set properly. Be sure not to draw more current than your supply can handle.

J4 – Temperature testing

J4 is located under the temperature sensor, and is used for factory tuning.

JP1 – JP5 – Analog input

These jumpers are available for input or output, depending on the firmware loaded. They can be used for analog telemetry, selection of options, or driving external loads. JP1 is connected to J1 pin 4. JP5 is connected to pull-up resistor R7. The 5 pins nearest the edge of the board are grounds.

Serial Power - Jumper JP6

This jumper controls what power is connected to the GPS via J2 pin 4. When the left two pins are connected, 5V is available on J2 pin 4. When the right two are connected, Vin is available there. When none of the pins are connected (no jumper) J2 pin 4 is not connected. Do not set the jumper to the right two pins when using a 5V GPS, such as the Byonics GPS2.

Serial Level Jumpers - Jumper JP7A & JP7B

The TinyTrak4 defaults to the secondary serial port (on J2 pins 7 & 8) using RS-232 voltage levels. It can be changed to TTL voltage levels by cutting the two traces connecting the left and center pins of JP7A & JP7B on the bottom side of the circuit board. Once these are cut, place 2 1x3 header posts into the top side of the PCB, and select secondary RS-232 levels with two jumpers connecting the left pins to the center pins. Select TTL levels by connecting the two right pins to the center pins. This interface is different on the other versions of the TinyTrak4.

PTT Control - Jumper JP8

This jumper adds the resistor R15 (2.2K) to the radio mic line to allow PTT via the mic audio connector. It should be closed (shorted) for use with handhelds other than Kenwood. For mobile radios and Kenwood radios, J8 should be open.

J9 - PORT C Interface

This 2x5 header post allows for connection to the 8 Port C pins, plus power and ground. It is currently used to interface to a 20x4 LCD display and PC keyboard in the Alpha firmware. This interface doesn't exist on the kit version of TinyTrak4.

J10 – Audio Out Level Booster

A 1x2 header post can be added to the J10 holes, and a jumper placed between them to bypass R6 and boost the audio out level to the radio. This will help with radios that cannot get enough audio deviation with a standard TinyTrak4.

TinyTrak4 Adjustment

Transmit Audio Level – R1

The transmit audio level should be adjusted at R1 for proper deviation. If using the TinyTrak tracker firmware, use the transmit tones buttons (1200 Hz/2200 Hz/Send Both) in the configuration software to cause the TinyTrak4 to transmit while adjusting. You can listen on a separate receiver, and start the potentiometer at maximum drive. Lower the drive level until there is a noticeable change in the receiver. Overdriving the transmitter is a common cause of failure to decode.

Temperature adjustment – R24

R24 can be used to tweak the voltage level out of the temperature sensor. Use the diagnostic firmware, or other firmware that reports the temperature, and adjust to match the correct temperature. Note this interface doesn't exist on the kit version of TinyTrak4.

Firmware Updates

The TinyTrak4 firmware can be updated at any time to new and improved functionality with just a computer serial port. This is done with the .TT4 files, which are new programs which can be burned into the main TinyTrak4 chip. See the TinyTrak4 Firmware Manual for more information.

Troubleshooting

Hints, Tricks, & Notes

- The TinyTrak4 draws about 40mA, and about 80mA when connected to a Byonics GPS2 receiver.
- JP6 is a jumper to GPS power output. It is not a power input.
- TinyTrak4 DB-9 connectors are pin compatible with TinyTrak3, so GPS and Radio/Power cables for one will work with the other.
- A Null modem adapter and gender changer, or a similar LapLink cable is needed whenever TinyTrak4 is connected to a computer serial port.